

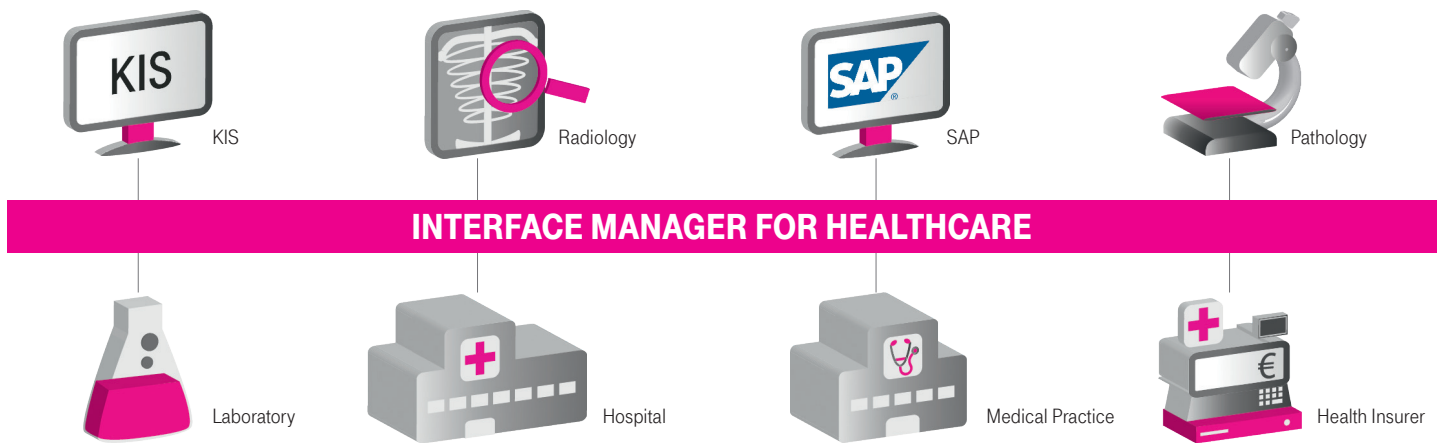


CONNECT IT SYSTEMS SECURELY INTERFACE MANAGER FOR HEALTHCARE – THE INTEGRATION SERVER FOR HOSPITALS

In hospitals, patients' data must be made available to functional areas of all kinds via the hospital network to contribute to swift and appropriate treatment. The sore point is that although specific applications and systems are as a rule incorporated in the hospital network, the communication standards used leave enormous leeway for interpretation with the result that two systems, each of which supports HL7, may not necessarily understand each other. As a result, customized point-to-point connections have to be set up at great expense of both installation and maintenance. This is where the Interface Manager for Healthcare (IM4HC) remedies matters.



HEALTHCARE SOLUTIONS



As an integration server, the Enterprise Service Bus (ESB) solution receives data, converts it into the target format required and relays it to the target system. No adaptation for specific applications and systems is required, so users can continue to work as usual with the systems to which they are accustomed.



Remote monitoring by smartphone app is possible

The Interface Manager fulfills the requirements of modern hospital integration servers:

Creates Leeway for Administrative and Medical Staff

- Connects IT systems of all kinds around the hospital
- Clinical systems can be procured regardless of interface compatibility
- Systems can be migrated and updated while they are up and running
- SAP-HCM interface is adapted automatically
- Centralized, modern user interface, can be monitored by terminal device or smartphone/tablet app

Increases Operational Security

- Tried and tested availability, even under heavy load conditions
- High level of data security due to integrated archiving and protocolling functions
- Developed for highly critical environments, well proven in practice for years

Secures Investments

- Open, modular, and scalable system architecture (SOA)
- Independent of third-party manufacturers because it is Java-based
- Developed locally by us in Germany, can be expanded flexibly
- Complies with regulatory requirements such as IEC 80001-1
- Comes with a wide range of adapters and connectors for all major protocols, data formats, and databases: HL7, HCM, Web Services (WSDL), HTTP(S), FTP, SMTP, RFC, BAPI, data interfaces, Oracle, MySQL etc.

Available with Operational Options

- In-house operation
- Operation at Telekom data centers in Germany

TO FIND OUT MORE, VISIT

www.telekom-healthcare.com
E-mail: health@t-systems.com

CONTACT

Christian De Win
Pascalstr. 11, 10587 Berlin
+49 30 8353 84357
christian.de-win@t-systems.com

PUBLISHED BY

Deutsche Telekom AG
Telekom Healthcare Solutions
53262 Bonn
Germany